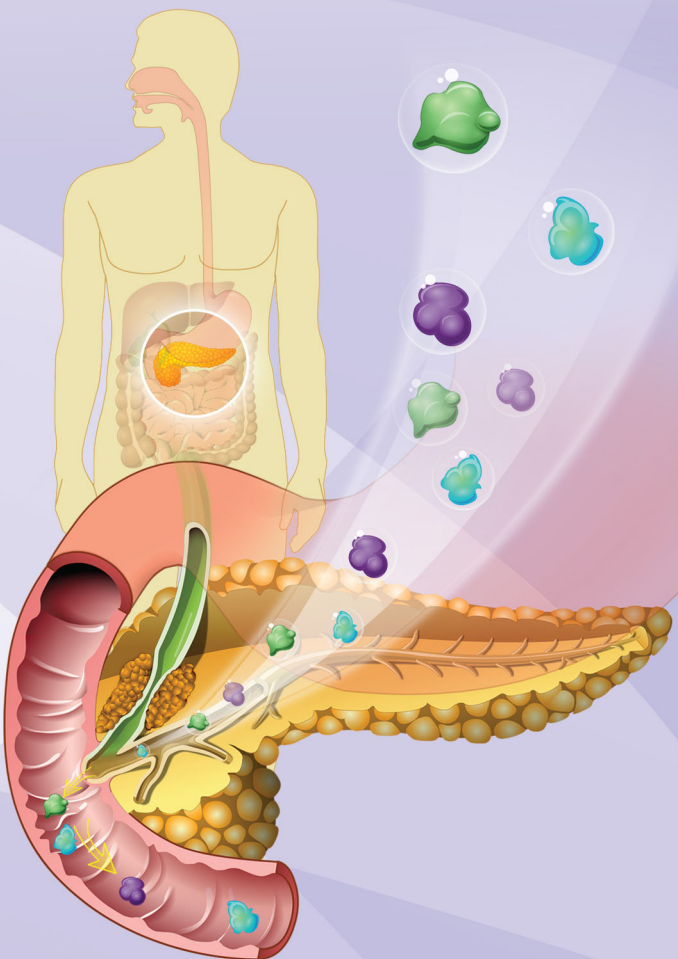




The
National Pancreas
Foundation

Animated Pancreas Patient™



Learn more at

AnimatedPancreasPatient.com

Education for patients

This National Pancreas Foundation resource is intended for patients with diseases of the pancreas.

You will find expert advice about **pancreatic diseases** to help you discuss key issues with your health care provider and make important decisions related to management and treatment.

Learn about these topics

- Understanding Pancreatitis
- Management of Pancreatic Diseases
- Pancreatic Cancer
- Endoscopic Procedures
- Pancreatic Surgery
- Nutrition and PERT
- Understanding Clinical Trials

Learning tools



Animations



Expert Videos



Patient Videos



Slide Shows



Addressing Patient Concerns:

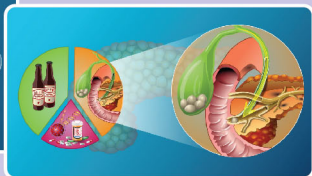
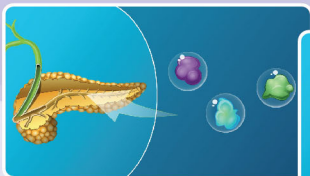
Watch an expert panel of pancreatic disease specialists discuss topics and questions that matter to patients.



The
National Pancreas
Foundation

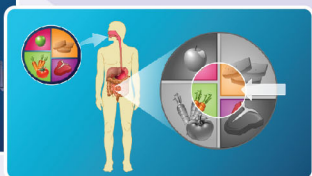
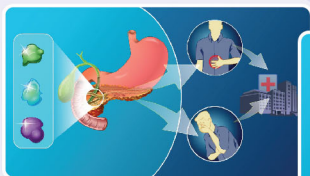
Module 1: Understanding Pancreatitis

- Role and anatomy of the pancreas
- What is acute pancreatitis?
- What is chronic pancreatitis?
- What is exocrine pancreatic insufficiency (EPI)?



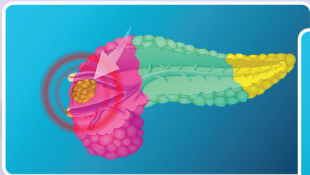
Module 2: Management of Pancreatitis

- How is acute pancreatitis treated?
- How is chronic pancreatitis treated?
- What are pancreatic cysts?
- What food and beverages to avoid?



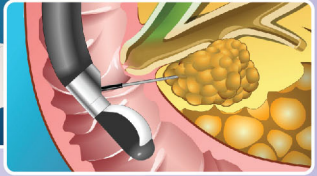
Module 3: Pancreatic Cancer

- What are the signs, symptoms and risk factors of pancreatic cancer?
- How is pancreatic cancer diagnosed?
- What are the treatments for pancreatic cancer?



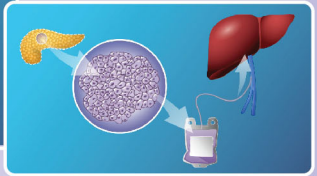
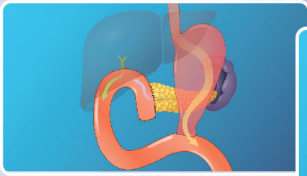
Module 4: Endoscopic Procedures

- What is ERCP (Endoscopic Retrograde Cholangiopancreatography)?
- What is EUS-FNA (Endoscopic Ultrasound-Guided Fine-Needle Aspiration)?



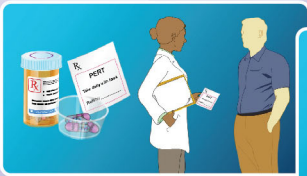
Module 5: Pancreatic Surgery

- What are the benefits and risks of surgery?
- When is pancreatic surgery initiated?
- What is a Whipple procedure?
- What is a distal pancreatectomy?



Module 6: Nutrition and PERT

- What are the causes and symptoms of exocrine pancreatic insufficiency (EPI)?
- What is the role of pancreatic enzyme replacement therapy (PERT)?

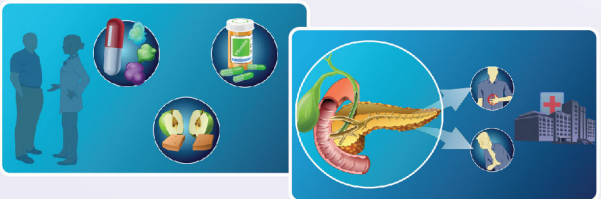


Animated Pancreas Patient™

AnimatedPancreasPatient.com

Module 7: Understanding Clinical Trials

- What is a clinical trial and how can patients become enrolled?
- What is the difference between a Phase I, II, III, and IV clinical trial?
- What are the benefits and risks of volunteering for a clinical trial?



**Also available in Spanish at
www.PancreasAnimado.com**

National Pancreas Foundation Mission

The National Pancreas Foundation provides **hope** for those suffering from pancreatitis and pancreatic cancer through funding cutting edge **research**, **advocating** for new and better therapies, and providing **support** and **education** for patients, caregivers, and health care professionals.

Learn more at www.pancreasfoundation.org



**The
National Pancreas
Foundation**

Animated Pancreas PatientTM

AnimatedPancreasPatient.com

This program has been developed by



**The
National Pancreas
Foundation**

**Mechanisms in
Medicine**

Interactive Animated Medical Education

This online resource is part of **The Animated Patient Series** developed by Mechanisms in Medicine Inc. to provide highly visual formats of learning for patients to improve their understanding, make informed decisions, and partner with their health care professionals for optimal outcomes.

This educational activity is supported by

abbvie

**Boston
Scientific**



ETHICON

PART OF THE *Johnson & Johnson* FAMILY OF COMPANIES



Get the App or visit the website

www.AnimatedPancreasPatient.com

Spanish: www.PancreasAnimado.com



**The National Pancreas Foundation
3 Bethesda Metro Center, Suite 700
Bethesda, MD 20814
www.pancreasfoundation.org**